

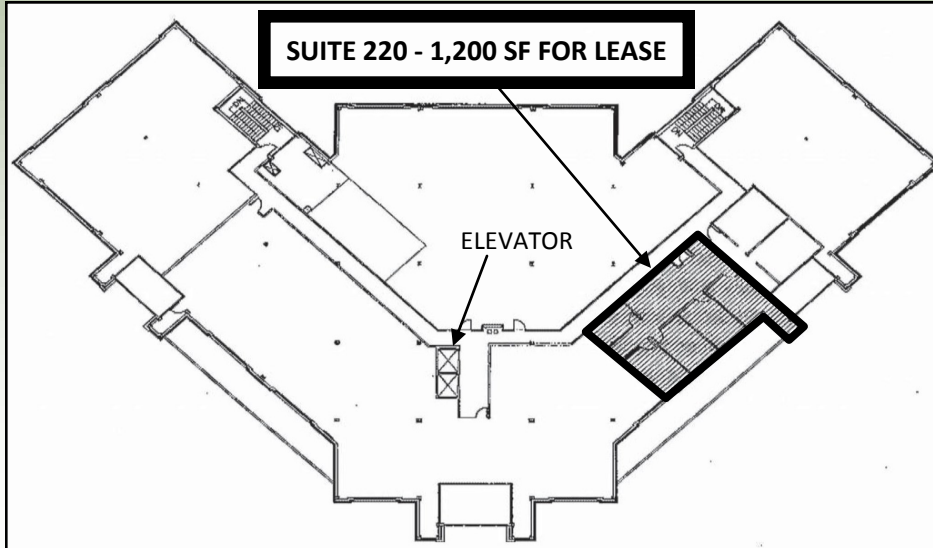
**1000 WEST NIFONG, SUITE 220 OF BUILDING 6,
WOODRAIL CENTRE, COLUMBIA, MO**

1,200 SF AVAILABLE FOR LEASE

SUITE 220 OF BUILDING 6

**LIST PRICE FOR LEASE: \$20,000 PER
YEAR + NNN + CONDO FEES INCLUDING
UNITS PORTION OF PRORATED UTILITIES**

AVAILABLE FOR LEASE: 1,200 SQ FT (+/-)



Excellent 1,200 sf (+/-) office space available for lease consisting of four large offices, waiting room and kitchenette. Access through the main entrance of the building grants second floor access by elevator. Tenants share common restroom facilities located in the main hall of the second level. Some utilities such as water, sewerage and gas are supplied to the suites by the building and are prorated monthly per suite.

Additional information available upon request. Contact Central States Brokers & Auctioneers at [800-499-6774](tel:800-499-6774) or via email at info@brokersandauctioneers.com



OFFICE: 800-499-6774

EMAIL: INFO@BROKERSANDAUCTIONEERS.COM

SCOTT MARTIN (BROKER): 660-621-2943

NOEL SCHAFFER (LISTING AGENT): 573-721-3826

BrokersandAuctioneers.com